

Carrière de BRS  
 Casquette trémie  
 Tir du 23/10/2023  
 Sismographe placé au  
 261 Halleux  
 4710 Comblain-au-Pont

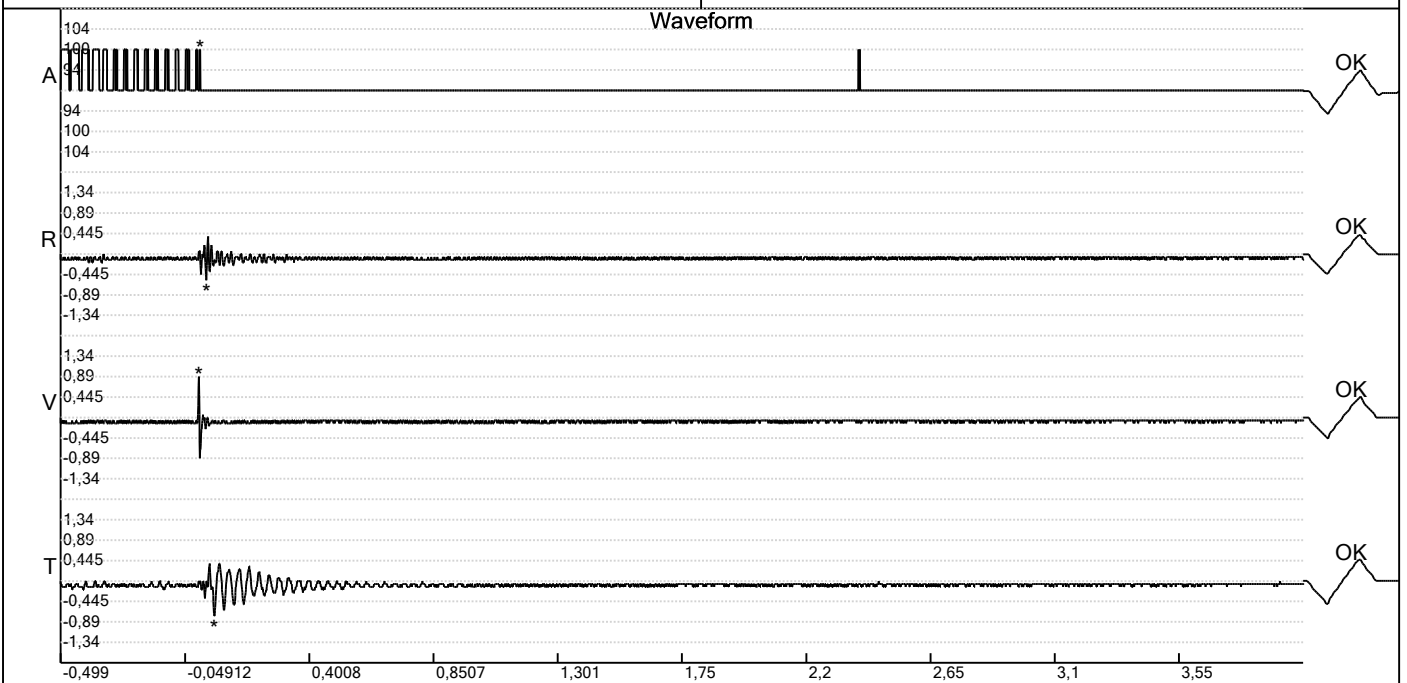
Record: 178920231023131752.dtb  
 Number: 052  
 Seismograph: Mini-Seis 1789  
 Type of Record: Waveform  
 Date: 23-10-23 13:17:00  
 Duration: 4,50 Seconds  
 Sample Rate: 1024  
 Pre-Trigger: 0,5 Seconds  
 Seismic Trigger: 0,51 mm/s  
 Acoustic Trigger: 142,1 dB  
 Seismic Gain: 63,5  
 Acoustic Gain: 141,9 dB  
 Voltage: 6,2

Peaks and Frequencies

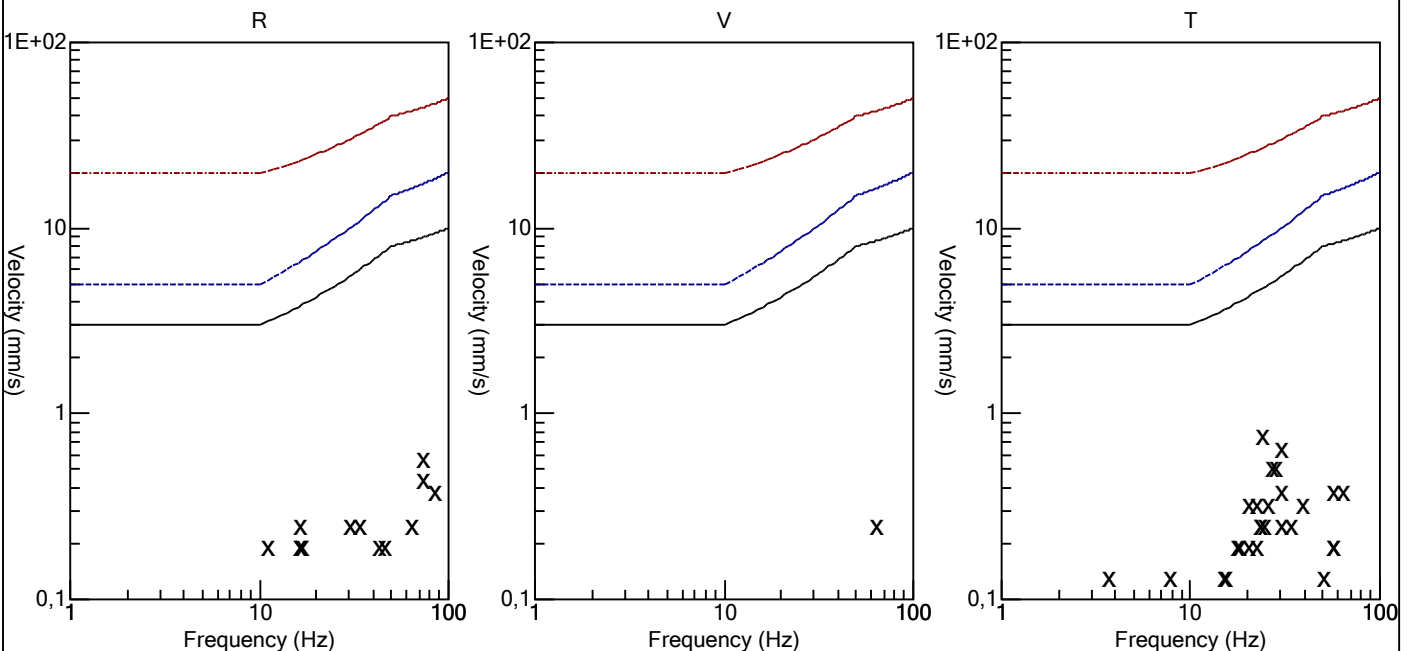
PPV Maximum (Geo #1): 0,89 mm/s  
 Acoustic #1: 100,0 dB @ 0,0 Hz (0,005859375 s)  
 Radial #1: 0,57 mm/s @ 73,1 Hz (0,02929688 s)  
 Vertical #1: 0,89 mm/s @ 102,4 Hz (0,001953125 s)  
 Transverse #1: 0,76 mm/s @ 24,3 Hz (0,05761719 s)  
 Last Calibration Date:

Graph Information

Time Range: -0,499 s to 4 s, Intervals: 0,4499 Seconds



Velocity vs. Frequency (DIN 4150-3 Tab 1)

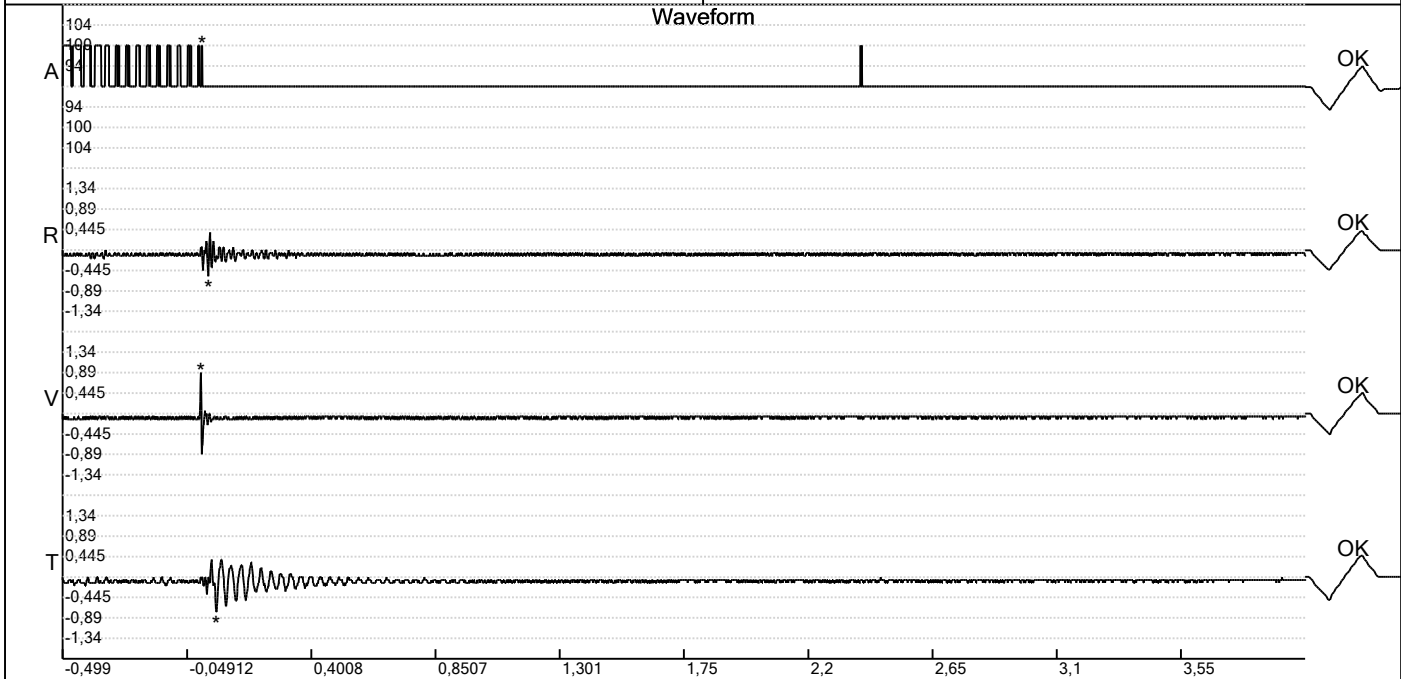


Carrière de BRS  
 Casquette trémie  
 Tir du 23/10/2023  
 Sismographe placé au  
 261 Halleux  
 4710 Comblain-au-Pont

Record: 178920231023131752.dtb  
 Number: 052  
 Seismograph: Mini-Seis 1789  
 Type of Record: Waveform  
 Date: 23-10-23 13:17:00  
 Duration: 4,50 Seconds  
 Sample Rate: 1024  
 Pre-Trigger: 0,5 Seconds  
 Seismic Trigger: 0,51 mm/s  
 Acoustic Trigger: 142,1 dB  
 Seismic Gain: 63,5  
 Acoustic Gain: 141,9 dB  
 Voltage: 6,2

**Peaks and Frequencies**  
 PPV Maximum (Geo #1): 0,89 mm/s  
 Acoustic #1: 100,0 dB @ 0,0 Hz (0,005859375 s)  
 Radial #1: 0,57 mm/s @ 73,1 Hz (0,02929688 s)  
 Vertical #1: 0,89 mm/s @ 102,4 Hz (0,001953125 s)  
 Transverse #1: 0,76 mm/s @ 24,3 Hz (0,05761719 s)  
 Last Calibration Date:

**Graph Information**  
 Time Range: -0,499 s to 4 s, Intervals: 0,4499 Seconds



**Fast Fourier Transform (Amplitude Spectrum)**

